

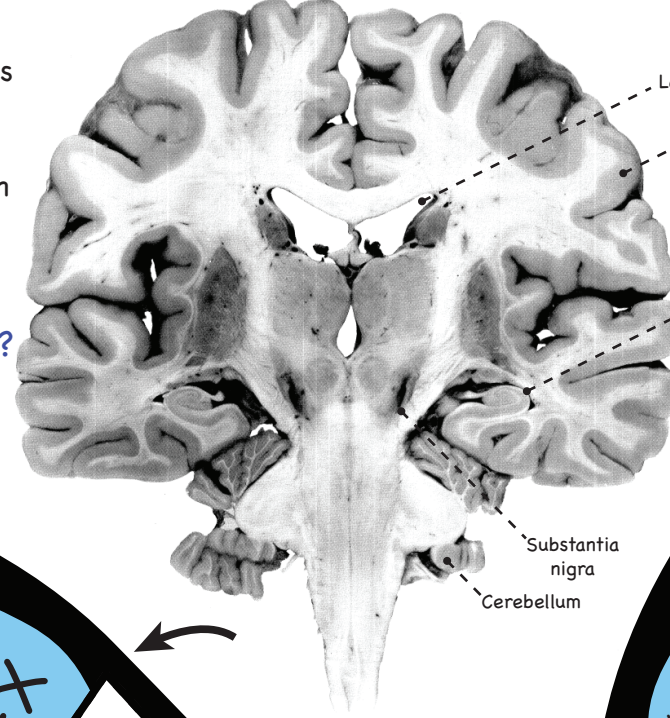
Questions: 1. What makes human beings so smart? A. We have the largest brains in the animal kingdom; B. Our brains have more total neurons than other animals; C. We have more neurons in the cerebral cortex (outermost layer of the lobes) than other animals

2. Why is the human brain so folded (& the mouse/rat brain so smooth)? A. Nobody knows why; B. Human brains have many parts/regions that rodent brains don't have; C. Humans (and many other species, e.g. cats, dogs, lions, chimpanzees, & elephants) evolved brain folds (gyrification) to pack their larger cerebral cortex into a smaller volume (& smaller head)

3. What part of the brain has the most nerve cells (neurons)? A. The frontal lobe; B. The temporal lobe; C. The brainstem; D. The cerebellum

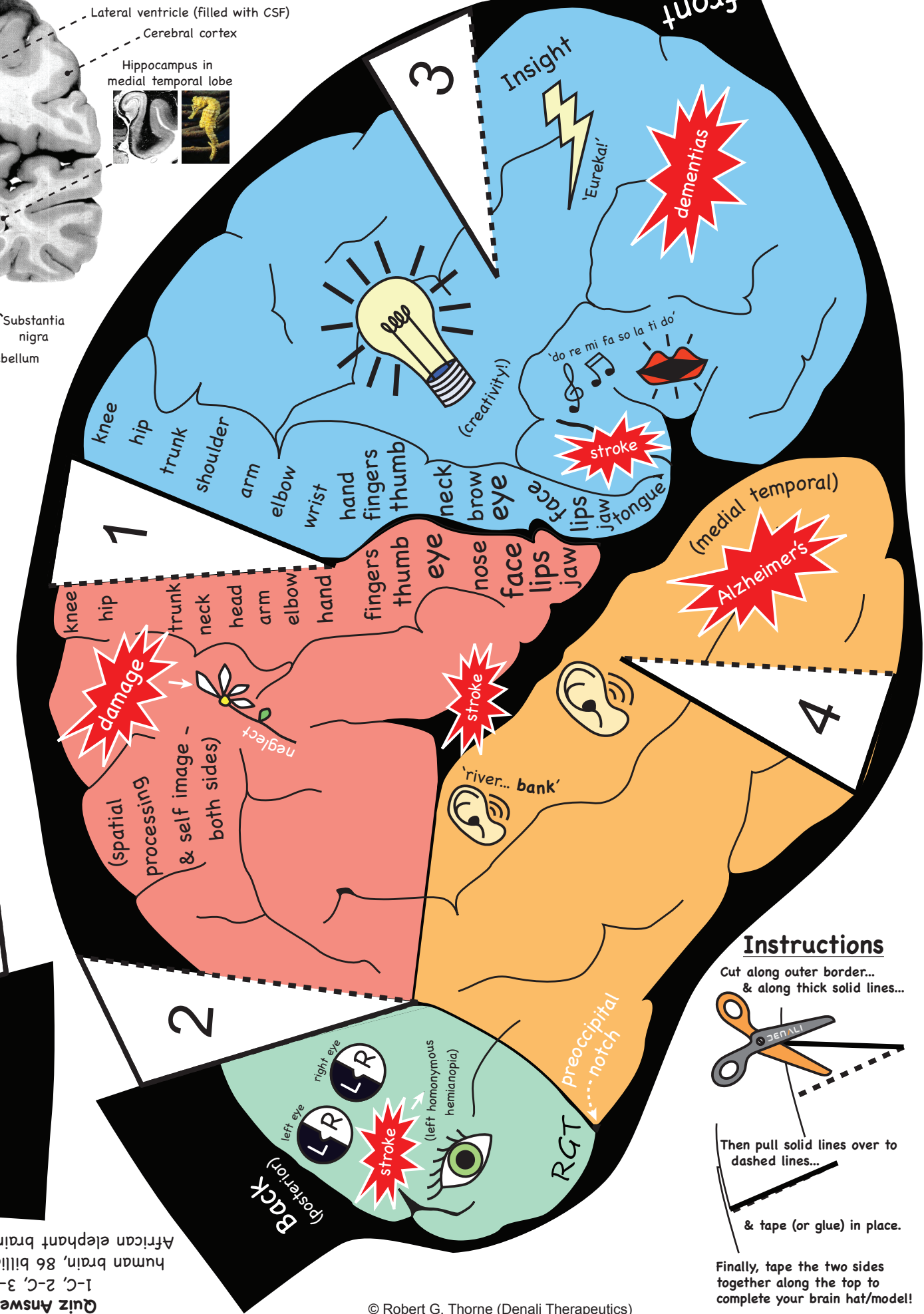
Bonus: How many brain nerves are there in a human? how many in a mouse? There are 12 cranial nerves in both (below left); brains share many similarities across species!

Human Brain (coronal section, unstained)



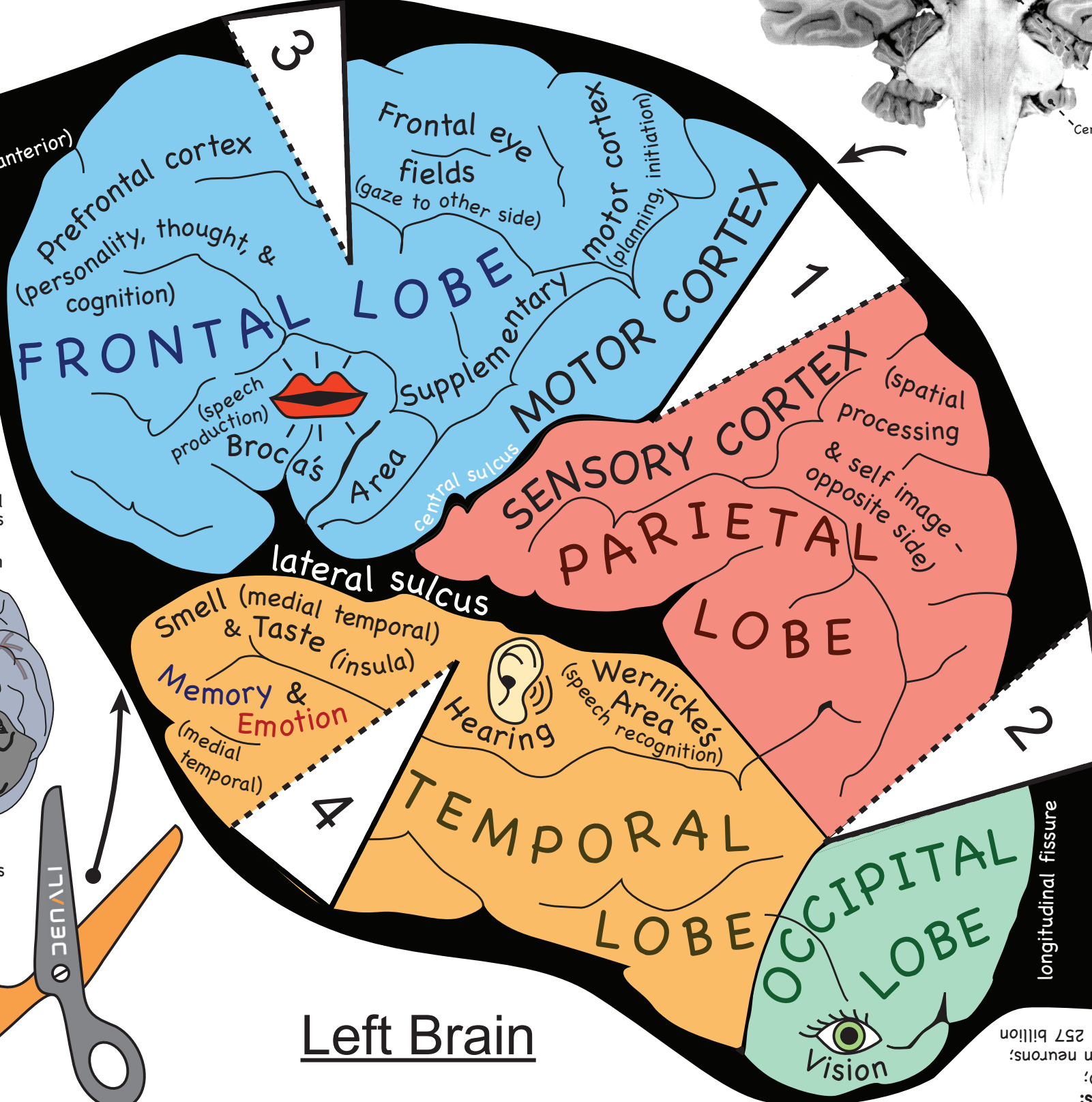
Lateral ventricle (filled with CSF)
Cerebral cortex
Hippocampus in medial temporal lobe
Substantia nigra
Cerebellum

Right Brain

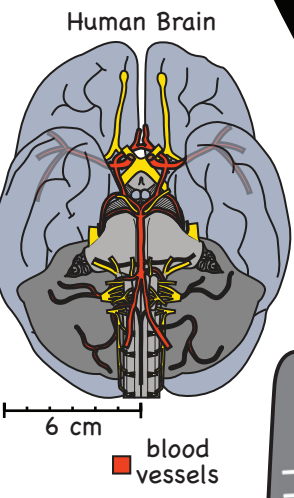
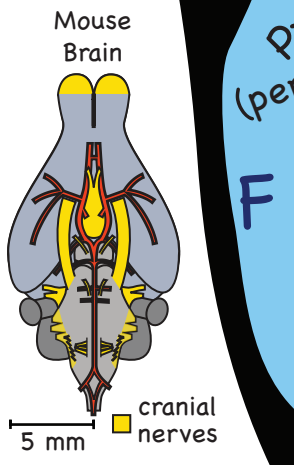


Instructions

Cut along outer border... & along thick solid lines...
Then pull solid lines over to dashed lines...
& tape (or glue) in place.
Finally, tape the two sides together along the top to complete your brain hat/model!



Left Brain



Quiz Answers:
1-C, 2-C, 3-D;
human brain, 86 billion neurons;
African elephant brain, 257 billion